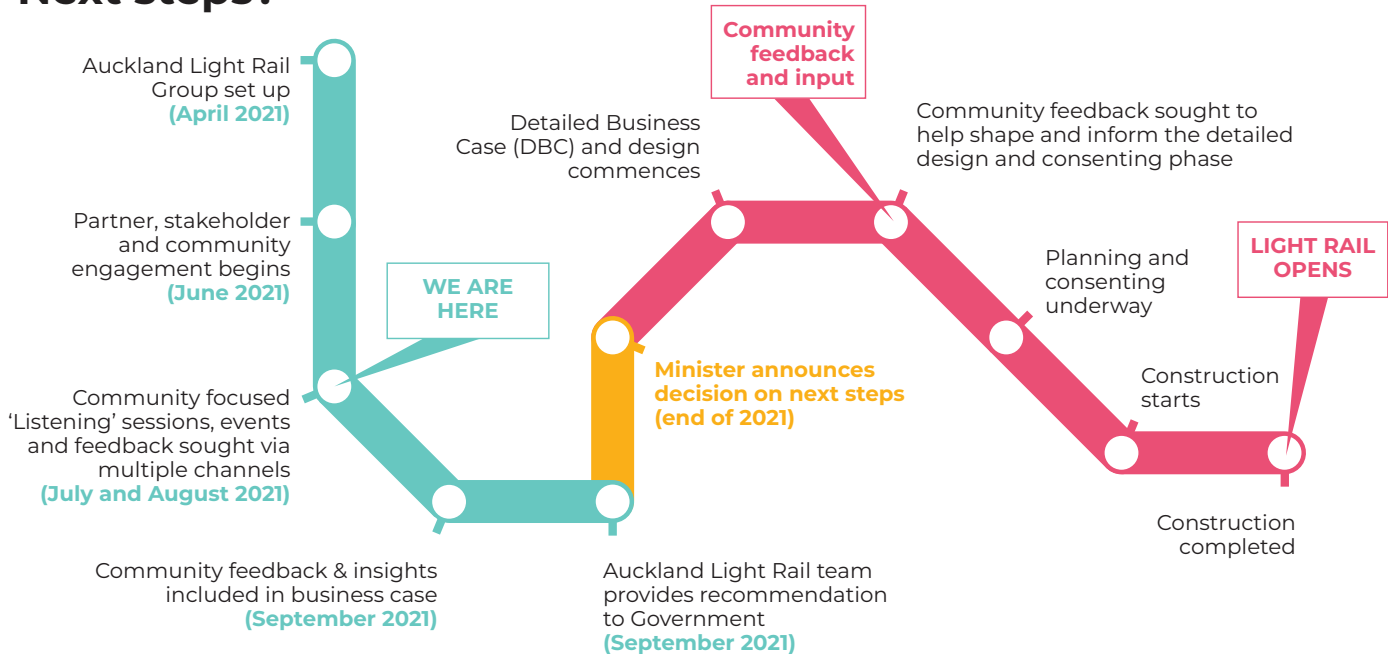



# Next steps?



 Indicative Business Case

 Detailed Business Case, consenting and construction. Estimated 2 years consenting; 6-8 years construction

If the Government decides to proceed, they will determine the right delivery entity to see the project through the next phases. In the next phase the detailed design will be confirmed including route, mode, community outcomes and location of stops. Community input will be sought to help shape these decisions and so that the construction and operational phases of the project are carried out reflecting the interests of the community, local residents and businesses.