



Auckland
LIGHT RAIL
Bringing us closer

Changing the way we live in Auckland

Light rail is much more than a transport project. It's a step towards a better future for Auckland. This is a foundation for future growth and development that will enable our communities, economy and environment to thrive.

When we're easily connected to the places we visit most, our quality of life improves. As our city grows, light rail will help people move more freely.

The Ministry of Transport, Waka Kotahi NZ Transport Agency, Auckland Council, Auckland Transport, Kāinga Ora and Mana Whenua are working together on the Auckland Light Rail project to look at how light rail can work best for the city.

Our priority is to deliver light rail between the city centre and Māngere.

What will this project mean for you and your community? We want to hear your views.

Light rail will:

- Help create a more liveable, connected city that's easier, cleaner and safer to get around.
- Provide greater access to suburbs that currently have limited public transport.
- Encourage more development to meet the diverse housing needs of the city.
- Connect with other public transport, walking and cycling links.
- Stimulate investment along the route and bring jobs, shops and businesses closer to where people live.

At this stage, several modes of light rail are being looked at by the project team - including modern trams and light metro.

Modern trams travel on tracks on city streets. Light metro is fully separated from other traffic. Both can be above or below ground and could involve a combination of these along the route.

Why a City Centre to Māngere line?

The City Centre to Māngere line will connect two major employment hubs (Auckland City Centre and the Airport). It will connect with planned housing and deliver better access for communities including suburbs with limited public transport.

The line is the backbone of the network and will eventually connect with other light rail lines to the North and Northwest. This will benefit the whole city and allow far more people to move around the city freely.

17% of Auckland's population growth and 33% of job growth will take place along the route in the next 30 years.

Things we are investigating in this phase:

- 1 Looking at how the route will connect from the City Centre to Wynyard Quarter, plus a potential university connection.
- 2 Light rail could travel down Dominion Road or Sandringham Road.
- 3 Links into planned urban renewal, including Kāinga Ora housing at Mt Roskill and Māngere.
- 4 Looking at a connection between the motorway and existing Onehunga Station train/bus hub.
- 5 Looking at a new crossing of the Manukau Harbour. It will not affect the replacement of Old Māngere Bridge (currently being built).
- 6 Looking at a Māngere connection, including how to link with Māngere Town Centre and Kāinga Ora housing.
- 7 Looking at how to connect to Auckland Airport business park and the terminal.

Concept only. The route shown here is a potential connection to Mt Roskill, Onehunga, Māngere and the airport from the city centre. We are investigating all potential routes and alternatives to ensure the best outcome for Auckland.



Why are we looking at light rail as an option?

Investing in high capacity, high quality, rapid transit is critical to developing a modern, connected city which supports improved and new public spaces, homes, shops and community facilities. Connecting to buses, ferries, trains and walking and cycling, means people living along the route don't have to rely on cars to travel to the places they want to go to.

Light rail offers convenience, reliability, safety and comfort, making it a highly attractive public transport option. Unlike a bus route, rail is permanent and carries a lot more people. This encourages greater investment along the route because businesses and people want to be close to stops or stations. This enables more people to live in existing communities and can reduce the need for new development on the edges of the city.

Light rail carries more people per trip than cars and buses



Benefits



Capacity



Permanent



Frequent/ Reliable



Accessible



Sustainable



Safe



Comfortable

Artist's impression only – Māngere Town Centre.



Customer Vision

We are planning so future generations can have housing options within a 10 minute walk to light rail. Without the cost of a vehicle, they are more able to save for their own home or for further education. They arrive at a stop or station without needing a timetable and travel to work or study. In the evening they enjoy the same safe, convenient and reliable trip home.

What could light rail look like?

Modern trams

- Travel on tracks on existing streets
- Separate from traffic with its own lanes
- Have priority over cars at intersections and stops
- More stops along the route
- Stops are at street level for passengers to get on and off
- Drivers are required

Light metro

- Travels on tracks separated from other vehicles
- Could be elevated, underground or at street level
- More reliable because it is on its own route, free from traffic delays
- Stations are less frequent and more of a destination, located in town centres
- Stations are underground, or can be elevated
- Drivers may not be required as the system is automatic

Light metro (underground)

This option means putting light rail under the ground in a trench and covering it at local/town centres and for pedestrian crossings. The rest of the trench is open, semi covered and includes barriers for safety. This reduces the cost and means air flow systems are not needed.

Artist's impressions only to show how modern trams or light metro could look. Road widths differ and in some locations more space will be needed. This will depend on the design in the future.

Modern tram



Who are 'we' and what is our role?

The Auckland Light Rail team brings urban planners, landscape architects, housing specialists, transport planners, engineers, economic advisors and more from key agencies.

The project team is tasked with developing a business case and making recommendations. This will help to enable the Government to make a decision at the end of the year about the route, mode and delivery entity for the project.

The team reports to a governance board with an independent chair and representatives of key agencies, local boards and Mana Whenua.

What will our recommendation consider?

As part of the business case the project team will consider how best to achieve these outcomes:

- A light rail service that:
 - Is attractive, reliable, frequent, safe and equitable
 - Is integrated with the current and future public transport network
 - Improves access to employment, education and other opportunities.
- A transport solution that embeds sustainable practice and reduces Auckland's carbon footprint
- Unlocking urban development potential, supporting a quality compact urban form and enabling integrated and healthy communities.



Your views are important

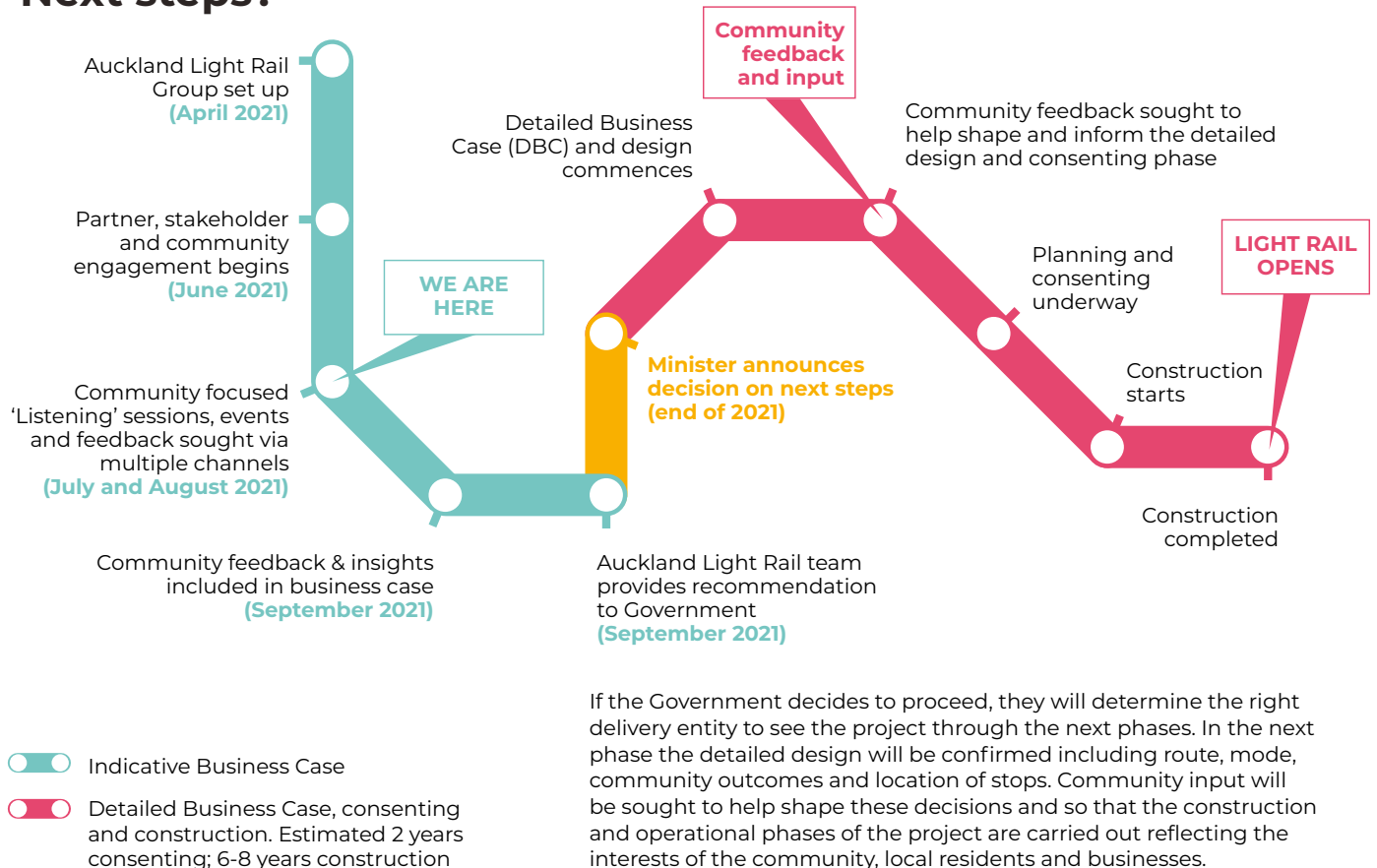
We are engaging with communities along the route and all Aucklanders, as this will be a transformational project for everyone.

We are asking questions that link to the key outcomes of the project. This will help us to understand what is important to you and your community.

At the end of this process, we will summarise your views and also report back to you about what people have said.

If a decision is made to progress the project, there will be more opportunities next year for people to feed back in the design, planning and consenting stages of the project. This includes details such as the location and design of stops/stations, route and community connections.

Next steps?



Meet us in person

Our team will be at community events and markets during July and August. Please check our website (lightrail.co.nz) for dates and locations.

For more information:

lightrail.co.nz

0800 567 847



Auckland
LIGHT RAIL
Bringing us closer

Feedback

Please complete this freepost form and return it to us by Tuesday 31 August 2021. Alternatively, you can provide feedback online at www.lightrail.co.nz

If you have difficulty completing the form, you can call us on 0800 567 847 and we will fill a form in for you over the phone. You can attach extra pages to this form, provide feedback online or by email to lightrail@nzta.govt.nz

1. How could light rail connect you to the places you like to visit most (work, study, play, other)?

2. Did you know light rail will help to reduce Auckland's carbon footprint and be easier on the environment. Is this important to you and your family?

Scale 1-5:

not important

1 2 3 4 5

very important

If it is a low priority, what is a priority for you?

Auckland needs more homes and jobs, and we are looking to put light rail in communities that are already building new homes and connecting with employment hubs.

3. Would you benefit from this? Why/ Why not?

4. What would make light rail attractive to use?

(please tick)

- | | |
|---|---|
| <input type="radio"/> close to school/education | <input type="radio"/> close to my work |
| <input type="radio"/> open all hours | <input type="radio"/> comfortable |
| <input type="radio"/> safety (road, other) | <input type="radio"/> safety (personal) |
| <input type="radio"/> convenient (not having to drive/park) | <input type="radio"/> reliable/frequent journey times |
| <input type="radio"/> sustainable travel option | <input type="radio"/> Other (please specify) |

5. Thinking about roads, traffic, moving around and getting to where you want to go: what would you like Auckland and your community to look like in the future?

6. What best describes your interest in this project?

(please tick all that apply)

- I live/own property along or near the route
- I work/own a business in the area
- I visit the area to shop/for entertainment
- I visit the area to work
- I visit the area for education
- I visit the area to see family/friends
- I drive or take the bus/train in the area
- I visit the area for other reasons (please specify)

7. Please tell us your age group? (For demographic purposes)

- | | |
|---|---|
| <input type="radio"/> 10 – 19 years old | <input type="radio"/> 20 – 29 years old |
| <input type="radio"/> 30 – 39 years old | <input type="radio"/> 40 – 49 years old |
| <input type="radio"/> 50 – 59 year old | <input type="radio"/> 60 – 69 years old |
| <input type="radio"/> 70 – 79 years old | <input type="radio"/> 80 years + |

8. If you live near the City Centre to Māngere route, please tell us which community you live in

- | | |
|--|--|
| <input type="radio"/> City Centre | <input type="radio"/> Eden Terrace/Kingsland |
| <input type="radio"/> Mt Eden/Sandringham/Balmoral | <input type="radio"/> Wesley/Mt Roskill |
| <input type="radio"/> Hillsborough | <input type="radio"/> Onehunga |
| <input type="radio"/> Māngere Bridge | <input type="radio"/> Māngere |
| <input type="radio"/> Favona | |

Your contact details

Name _____

Business/organisation _____

Street address _____

Suburb _____ City _____ Post code _____

Email _____ Phone _____

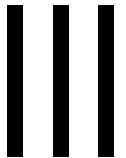
Please tick here if you would like to receive updates on the Auckland Light Rail project

Thank you

Providing your postal or email address ensures that we can contact you with updates on the project, including reporting back to you about what people have said. Providing personal details is optional. PRIVACY: Auckland Light Rail is committed to protecting your personal information.

Please fold and tape closed for mailing.

FreePost Authority 240269



Auckland Light Rail Project

Private Bag 106602

Auckland 1143