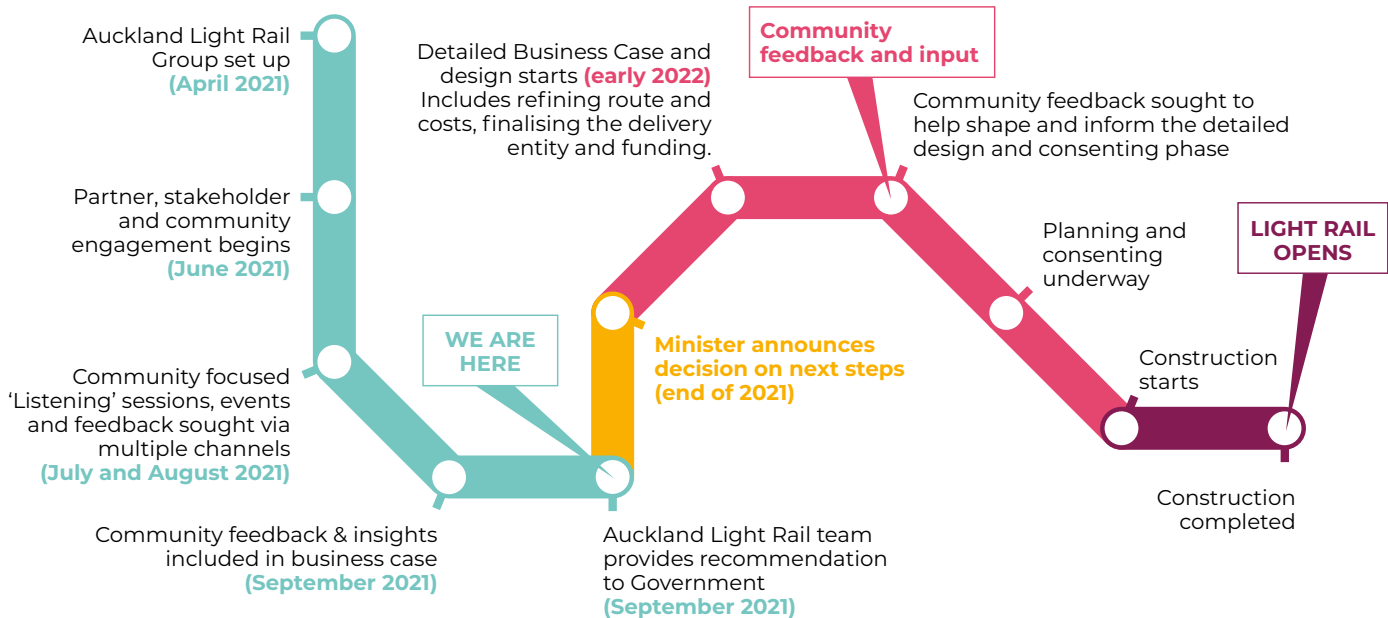





Next steps?



-  Indicative Business Case (6 months)
-  Detailed Business Case and consenting (3-4 years)
-  Construction (6-8 years)

If the project proceeds, in the next phase the detailed design will be confirmed including route, mode, community outcomes and location of stops. Community input will be sought to help shape these decisions and so that the construction and operational phases of the project are carried out reflecting the interests of the community, local residents and businesses.